

How to Plant Bare Root Perennials ‘High’

William B. Miller
Department of Horticulture
Cornell University
Ithaca NY

Flower Bulb
Research Program

Why plant high?

- Much better growth of bare root perennials compared to crowns planted deeper
- We recommend:
 - ◆ Plant so the crown (intersection of the roots and shoots) is *at or slightly above the soil surface*, after watering and settling
- See our Research Newsletter for full details at:

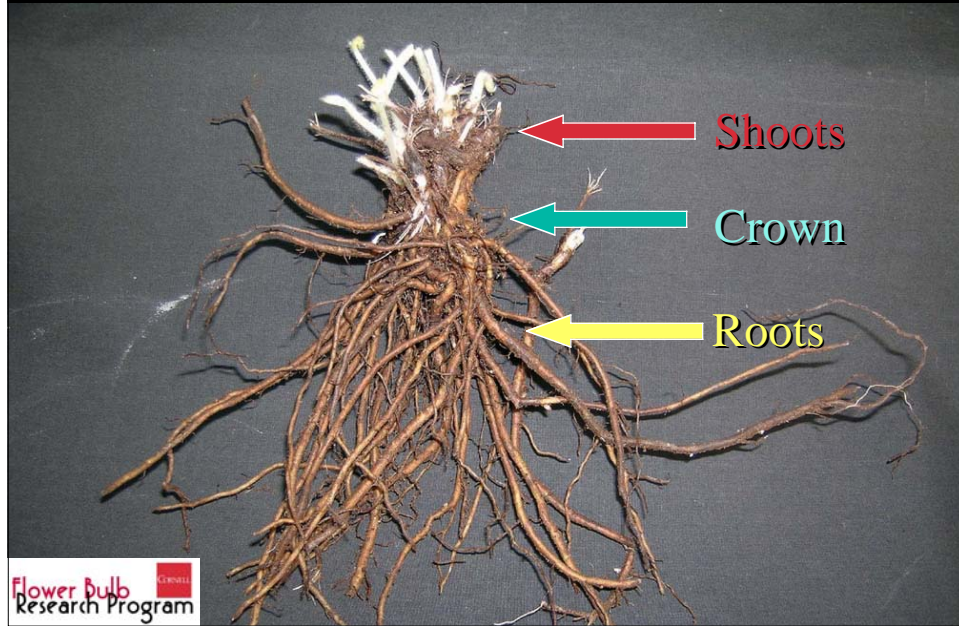
www.flowerbulbs.cornell.edu

then

click on “Recent Publications”

Flower Bulb
Research Program

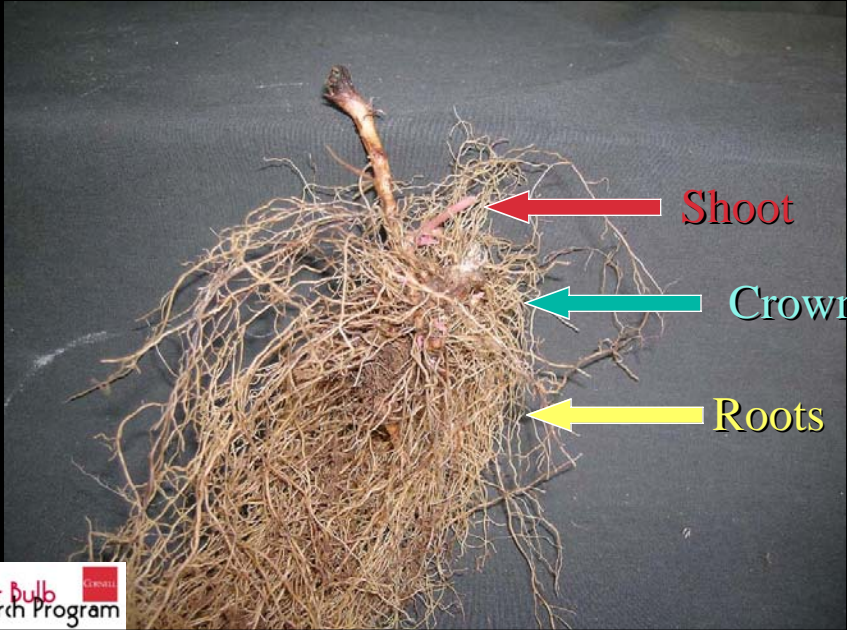
Anemone 'Honorine Jobert' crown



Anemone 'Honorine Jobert' "planted high"



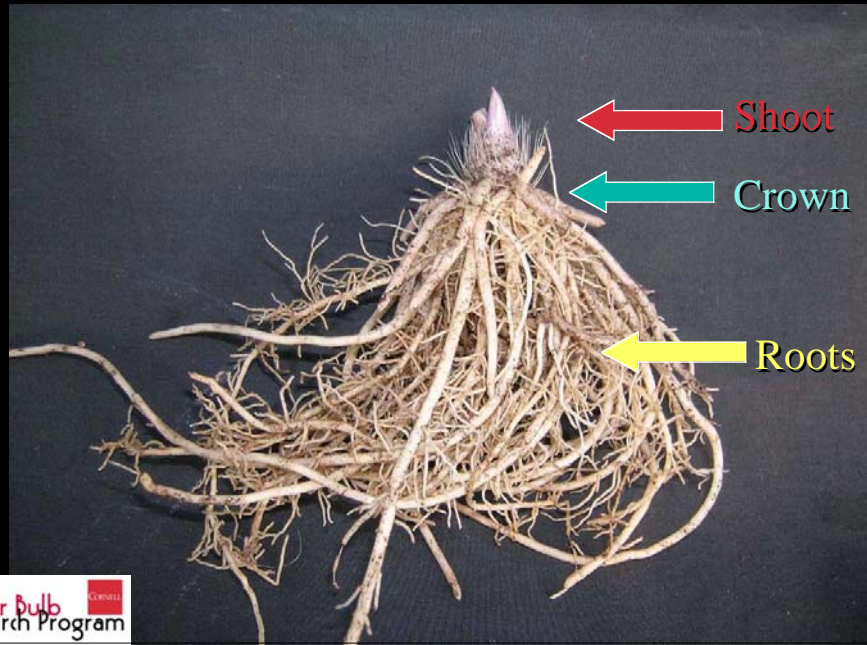
Epimedium sulphureum crown



Epimedium sulphureum “planted high”



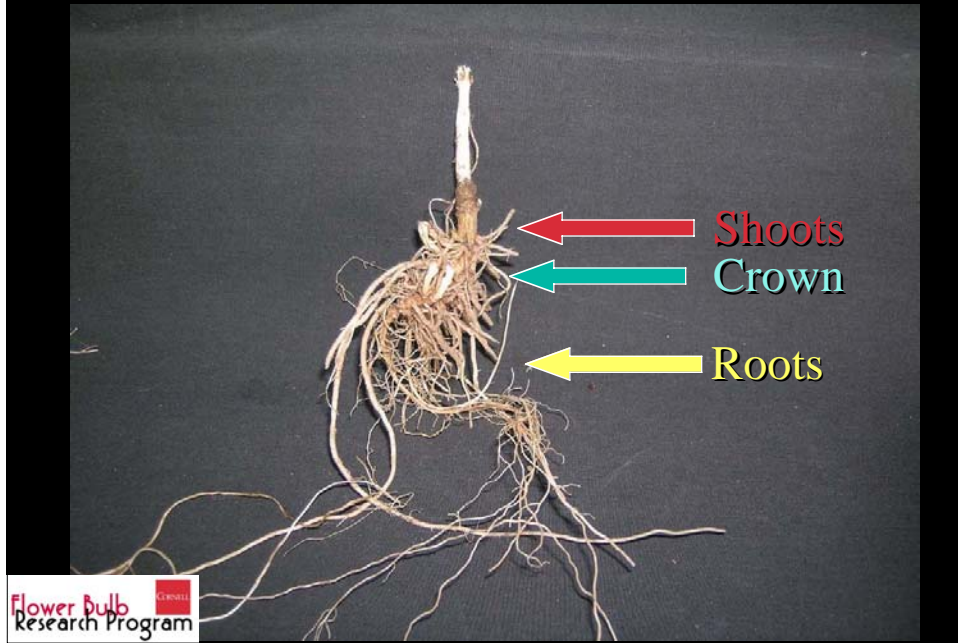
Hosta 'Queen Josephine' crown



Hosta 'Queen Josephine' "planted high"



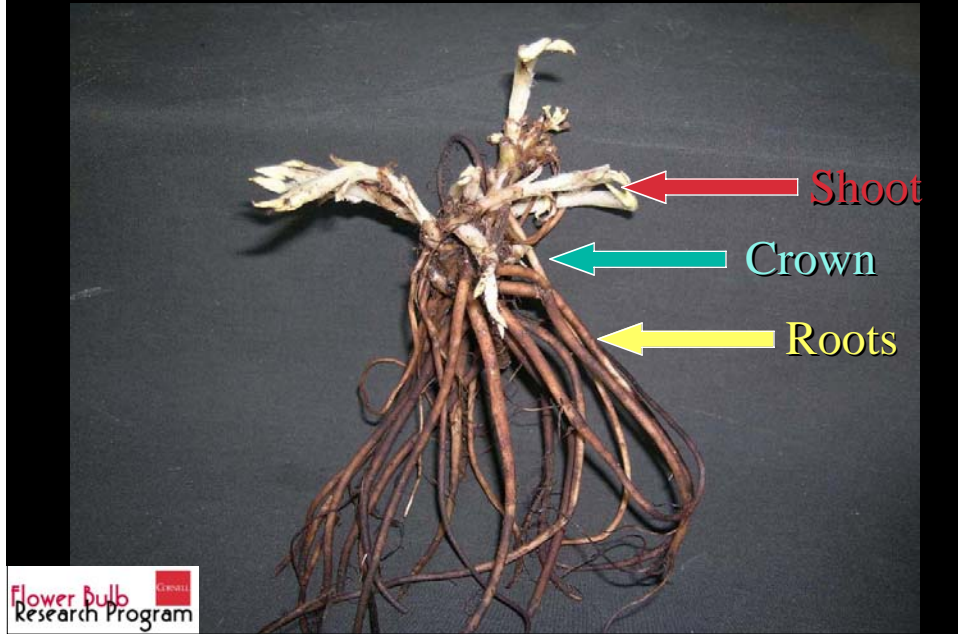
Phlox paniculata 'Laura' crown



Phlox paniculata 'Laura' "planted high"



Pulmonaria sacchara 'Dora Bielefeld' crown



Pulmonaria 'Dora Bielefeld' "planted high"



Salvia nemorosa 'Carradonna' crown



Salvia nemorosa 'Carradonna' "planted high"

